



BYRON GREEN LIGHTS

LED GARDEN & ARCHITECTURAL LIGHTING

# TECHNICAL SPEC SHEETS 2010

---

Deck & Eave Lights

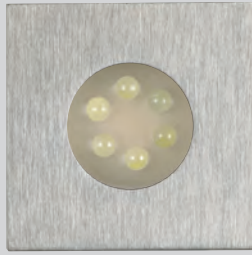
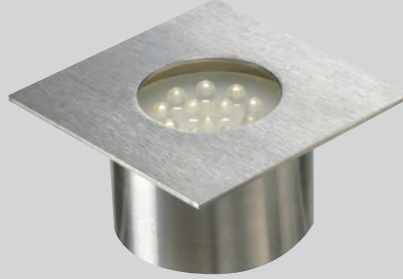
---

# Light This Light That LED Deck, Wall & Eave Lights

316 Marine Grade Stainless Steel  
Extremely low voltage



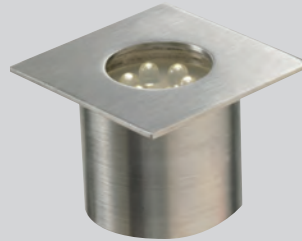
Model shown:  
LTD12



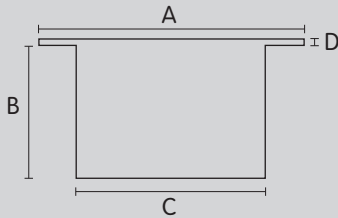
Model shown:  
LTD6



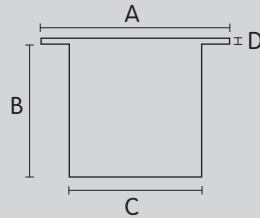
Model shown:  
LTD3



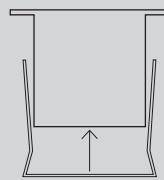
Profile is the same  
for both the LTD6  
and LTD3



Model shown:  
LTD12



Model shown:  
LTD6 and LTD3



Press fixing clip over  
bottom of light casing

The Light This Light That 316 'Marine Grade' Stainless Steel Deck lights are available in three models. Your Light This Light That LED Deck light is IP68 rated, which means it can be installed outdoors, under water, in your pond or water feature.

This light system contains non replaceable parts. Do not attempt to force open the light.

model	dimensions				light source	current
	length (A)	depth (b)	width (c)	thickness (d)		
LTD3	50mm x 50mm	40mm	38mm	1.5mm	#5mm led 3	20
LTD6	50mm x 50mm	40mm	38mm	1.5mm	6	40
LTD12	70mm x 70mm	40mm	50mm	1.5mm	12	80

Note: 1 Amp = 1000 milliamps (mA).

**Disclaimer:** Consistent with our product development policy, improvements may be made which render the contents of this document different to that shown. While every care has been taken with the details on this specification sheet, Light This Light That Pty Ltd accepts no responsibility for any inaccuracies and reserves the right to change the specifications without incurring obligation. Light This Light That Pty Ltd reserves the right to change specifications without notice.

## Specifications:


**Materials:** Casing: 316 Marine Grade Stainless Steel (or solid copper)  
Flange: 316 Marine Grade Stainless steel (or solid copper)  
Back: 316 Marine Grade Stainless steel (or solid copper)  
Face: Pexiglas Satinice® 'Pearl finish'  
Lense: SAR (Super Abrasion Resistant Acrylic) Acrylic — resists impact and shattering, 5 x impact resistance of glass, resists chemicals and abrasion. Weatherproof

**Power Source:** Low Voltage 12 V DC input (regulated)

**Weatherproof Rating:** IP 68  
**Pre wired:** Rear entry 900mm (length) weatherproof cable (20 gauge)

**Warranty:** 2 years  
**Cabling:** Light This Light That Weatherproof harness (18 gauge) with screw in plugs, or solder connection

**Fixing clip:** Easy to fix to villaboard, plaster walls or eaves, press and fit installation

**LED type:** State of art:  :5mm  
**LED Colours:** White. Other custom orders available  
**Size:** Designed to suit standard 45mm dressed steps

## Features:

- Australian Owned
- Australian Made
- Extremely Low Voltage
- 12 volt, not dangerous
- Up to 50,000 hours life
- Directional light efficiency
- Solid state technology
- No fragile glass environment
- Non corrosive materials
- Ideal for coastal environments
- No Maintenance
- No globes to maintain
- No Ultraviolet radiation
- No Infrared radiation
- No UV to attract insects
- Cool to touch
- Cool to stand on
- Doesn't burn plants
- Doesn't breakdown materials
- Easy installation, easy to move
- Can be used as wall or eave light
- Weatherproof IP 68
- 2 year replacement warranty

Australian Owned & Australian Made

 Light this Light that  
**led garden lights**  
consultants : installers : manufacturers

DISTRIBUTOR:

BYRON GREEN LIGHTS

Jason Hutchinson

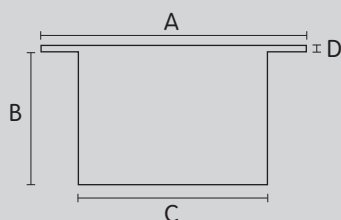
T: (02) 6680 1507

M: 0422 267 313

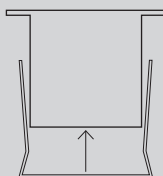
E: jason@byrongreenlights.com.au

# Light This Light That LED Square Face Deck, Wall & Eave Lights

316 Marine Grade Stainless Steel  
Extremely low voltage



Model shown:  
LTDS4



Press fixing clip over  
bottom of light casing

The Light This Light That 316 'Marine Grade' Stainless Steel Square Face Deck lights are IP68 rated, which means it can be installed outdoors, under water, in your pond or water feature.

This light system contains non replaceable parts.  
Do not attempt to force open the light.

model	dimensions				light source	current
	length (A)	depth (b)	width (c)	thickness (d)		
LTDS4	70mm x 70mm	40mm	50mm	1.5mm	#5mm led	20

Note: 1 Amp = 1000 milliamps (mA).

**Disclaimer:** Consistant with our product developemnt policy, improvements may be made which render the contents of this document different to that shown. While every care has been taken with the details on this specification sheet, Light This Light That Pty Ltd accepts no responsibility for any inaccuracies and reserves the right to change the specifications without incurring obligation. Light This Light That Pty Ltd reserves the right to change specifications without notice.

## Specifications:


**Materials:**  
**Casing:** 316 Marine Grade Stainless Steel (or solid copper)  
**Flange:** 316 Marine Grade Stainless steel (or solid copper)  
**Back:** 316 Marine Grade Stainless steel (or solid copper)  
**Face:** Pexiglas Satinice® 'Pearl finish'  
**Lense:** SAR (Super Abrasion Resistant Acrylic) Acrylic — resists impact and shattering, 5 x impact resistance of glass, resists chemicals and abrasion. Weatherproof

**Power Source:** Low Voltage 12 V DC input (regulated)

**Weatherproof Rating:** IP 68  
**Pre wired:** Rear entry 900mm (length) weatherproof cable (20 gauge)

**Warranty:** 2 years  
**Cabling:** Light This Light That Weatherproof harness (18 gauge) with screw in plugs, or solder connection

**Fixing clip:** Easy to fix to villaboard, plaster walls or eaves, press and fit installation

**LED type:** State of art:  NICHIA :5mm  
**LED Colours:** White. Other custom orders available  
**Size:** Designed to suit standard 45mm dressed steps

## Features:

- Australian Owned
- Australian Made
- Extremely Low Voltage
- 12 volt, not dangerous
- Up to 50,000 hours life
- Directional light efficiency
- Solid state technology
- No fragile glass environment
- Non corrosive materials
- Ideal for coastal environments
- No Maintenance
- No globes to maintain
- No Ultraviolet radiation
- No Infrared radiation
- No UV to attract insects
- Cool to touch
- Cool to stand on
- Doesn't burn plants
- Doesn't breakdown materials
- Easy installation, easy to move
- Can be used as wall or eave light
- Weatherproof IP 68
- 2 year replacement warranty

Australian Owned & Australian Made

 Light this Light that  
**led garden lights**  
 consultants : installers : manufacturers

DISTRIBUTOR:  
 BYRON GREEN LIGHTS

Jason Hutchinson  
 T: (02) 6680 1507  
 M: 0422 267 133  
 E: jason@byrongreenlights.com.au